



Honey Mews, SE27 | £485,000

02087029888

westnorwood@pedderproperty.com

pedder
We live local



In General

- Two double bedrooms
- Freehold
- Light & bright
- Conveniently located
- Potential to extend STPP

In Detail

A charming and well-presented two double bedroom terraced home, quietly nestled within a secluded and private mews in the heart of West Norwood.

This inviting property offers thoughtfully arranged accommodation, beginning with a bright and welcoming reception room that provides a comfortable space to relax and entertain. A separate fitted kitchen and a contemporary family bathroom completes the ground floor.

Upstairs, the home continues to impress with two generously sized double bedrooms, both enjoying excellent natural light and practical storage.

Well located a short walk from West Norwood's vibrant high street, excellent transport links from West Norwood & Tulse Hill stations, local parks, and sought-after schools, making this an ideal home for professionals, growing families, or those looking for flexible living in a desirable South London location.

EPC: C | Council Tax Band: C



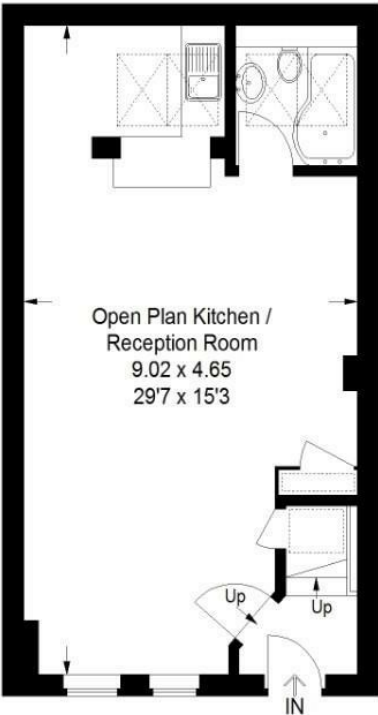
Floorplan

Honey Mews, SE27

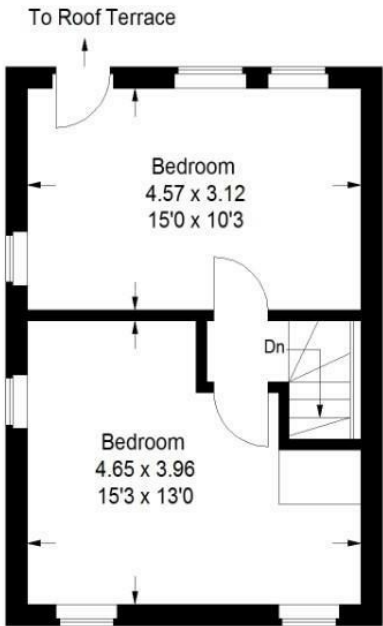
Approximate Gross Internal Area
76.0 sq m / 818 sq ft



[Dashed line] = Reduced headroom below 1.5 m / 5'0"

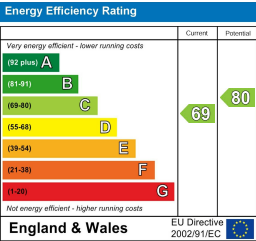


Ground Floor



First Floor

Copyright www.pedderproperty.com © 2026
These plans are for representation purposes only as defined by RICS - Code of Measuring Practice. Not drawn to Scale. Windows and door openings are approximate. Please check all dimensions, shapes and compass bearings before making any decisions reliant upon them.



Pedder Property Ltd trading as Pedder for themselves and for the vendor/landlord of this property whose agents they are, give notice that (1) these particulars do not constitute any part of an offer or contract, (2) all statements contained within these particulars are made without responsibility on the part of Pedder or the vendor/landlord, (3) whilst made in good faith, none of the statements contained within these particulars are to be relied upon as a statement of representation or fact, (4) any intending purchaser/tenant must satisfy him/herself by inspection or otherwise as to the correctness of each of the statements contained within these particulars, (5) the vendor/landlord does not make or give either Pedder or any person in their employment any authority to make or give representation or warranty whatsoever in relation to this property.